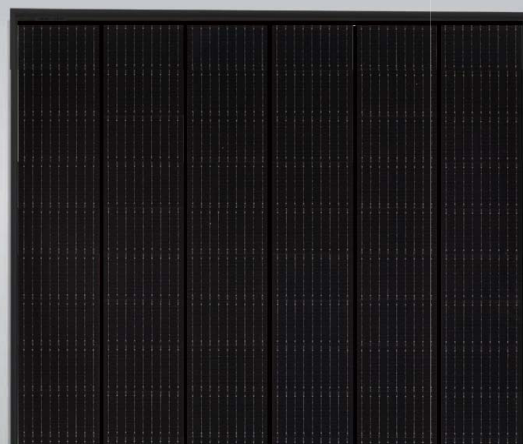


Tiger N-type All Black 385-405 Watt

Tiling Ribbon (TR) Technology

Positive power tolerance of 0~+3%

N-Type



KEY FEATURES



TR technology + Half Cell

TR technology with Half cell aims to eliminate the cell gap to increase module efficiency (mono-facial up to 21.22%)



Low Light Induced Degradation

The N-type cell shows extremely low light induced degradation (LID) performance when comparing with the P-type cell.



9BB instead of 5BB

9BB technology decreases the distance between bus bars and finger grid line which is benefit to power increase.



Higher lifetime Power Yield

1% first year degradation,
0.4% linear degradation



Best Warranty

25 year product warranty,
30 year linear power warranty



Better low-light performance

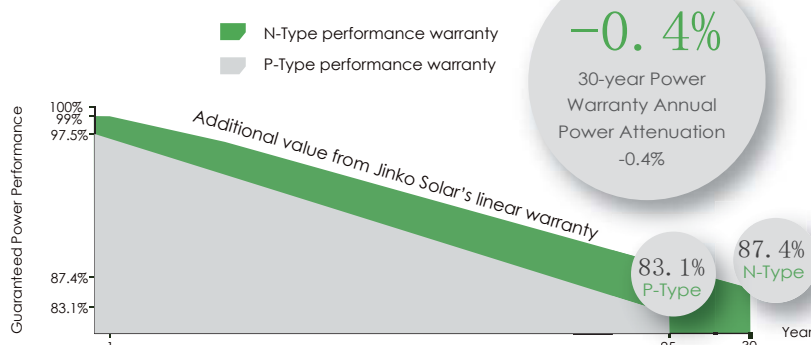
Excellent performance in low-light environments
(e.g. early morning, dusk, and cloud, etc.)



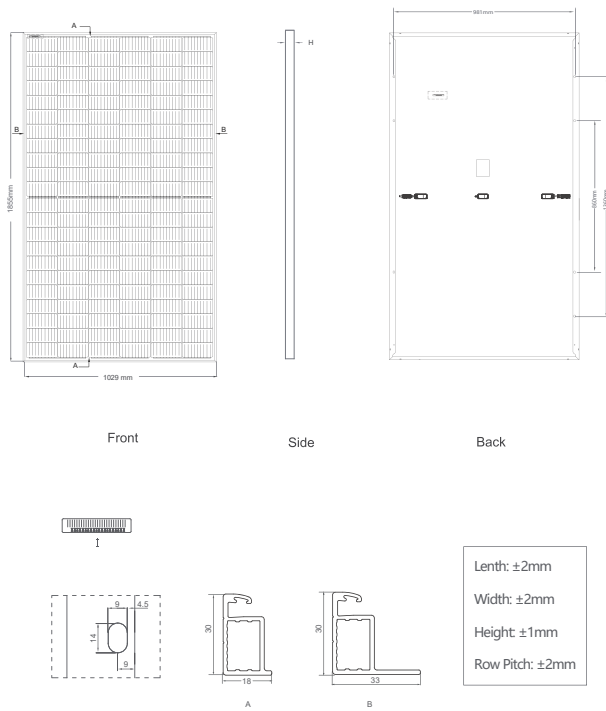
- ISO9001:2015, ISO14001:2015, OHSAS18001 certified factory
- IEC61215, IEC61730 certified product

LINEAR PERFORMANCE WARRANTY

25 Year Product Warranty 30 Year Linear Power Warranty
0.4% Annual Degradation Over 30 years



Engineering Drawings

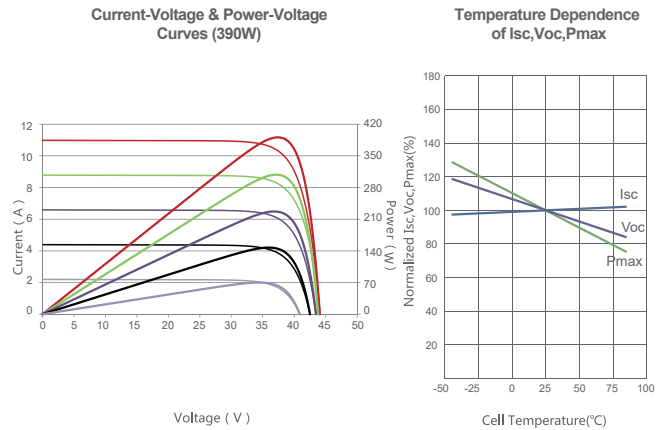


Packaging Configuration

(Two pallets = One stack)

35pcs/pallets, 70pcs/stack, 840pcs/ 40'HQ Container

Electrical Performance & Temperature Dependence



Mechanical Characteristics

Cell Type	N type Mono-crystalline
No. of cells	132 (2×66)
Dimensions	1855×1029×30mm (73.03×40.51×1.18 inch)
Weight	20.8 kg (45.86 lbs)
Front Glass	3.2mm, Anti-Reflection Coating, High Transmission, Low Iron, Tempered Glass
Frame	Anodized Aluminium Alloy
Junction Box	IP67 Rated
Output Cables	TUV 1×4.0mm ² (+): 290mm, (-): 145 mm or Customized Length

SPECIFICATIONS

Module Type	JKM385N-6RL3-B		JKM390N-6RL3-B		JKM395N-6RL3-B		JKM400N-6RL3-B		JKM405N-6RL3-B	
	JKM385N-6RL3-B-V		JKM390N-6RL3-B-V		JKM395N-6RL3-B-V		JKM400N-6RL3-B-V		JKM405N-6RL3-B-V	
	STC	NOCT	STC	NOCT	STC	NOCT	STC	NOCT	STC	NOCT
Maximum Power (Pmax)	385Wp	287Wp	390Wp	291Wp	395Wp	295Wp	400Wp	298Wp	405Wp	302Wp
Maximum Power Voltage (Vmp)	36.39V	33.15V	36.49V	33.25V	36.58V	33.35V	36.67V	33.43V	36.76V	33.55V
Maximum Power Current (Imp)	10.58A	8.66A	10.69A	8.75A	10.80A	8.83A	10.91A	8.92A	11.02A	9.00A
Open-circuit Voltage (Voc)	43.03V	40.53V	43.13V	40.62V	43.23V	40.72V	43.33V	40.81V	43.43V	40.90V
Short-circuit Current (Isc)	11.47A	9.26A	11.58A	9.35A	11.69A	9.44A	11.80A	9.53A	11.91A	9.62A
Module Efficiency STC (%)	20.17%		20.43%		20.69%		20.96%		21.22%	
Operating Temperature(°C)	-40°C~-85°C									
Maximum system voltage	1000/1500VDC (IEC)									
Maximum series fuse rating	20A									
Power tolerance	0~+3%									
Temperature coefficients of Pmax	-0.34%/°C									
Temperature coefficients of Voc	-0.28%/°C									
Temperature coefficients of Isc	0.048%/°C									
Nominal operating cell temperature (NOCT)	45±2°C									

* STC: Irradiance 1000W/m² Cell Temperature 25°C

AM=1.5

NOCT: Irradiance 800W/m² Ambient Temperature 20°C

AM=1.5

Wind Speed 1m/s

* Power measurement tolerance: ± 3%

The company reserves the final right for explanation on any of the information presented hereby. Tiger JKM385-405N-6RL3-B-(V)-D1-EN